

John Jenkins

Fantasys Nos. 13-18 à 3 Viols  
Two Trebles and Bass

Treble 1

Edited barless by  
Martha Bishop

# Fancy 13



A



B



C



D

Treble Viol 1



E



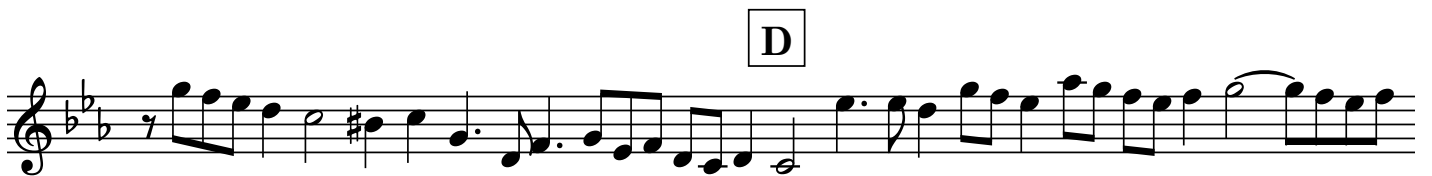
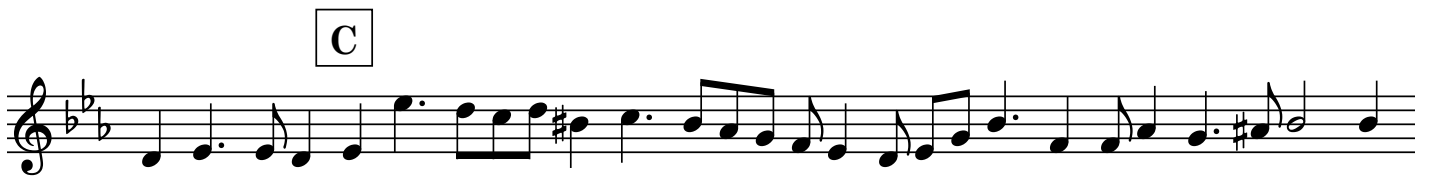
F



G



## Fancy 14





F



G



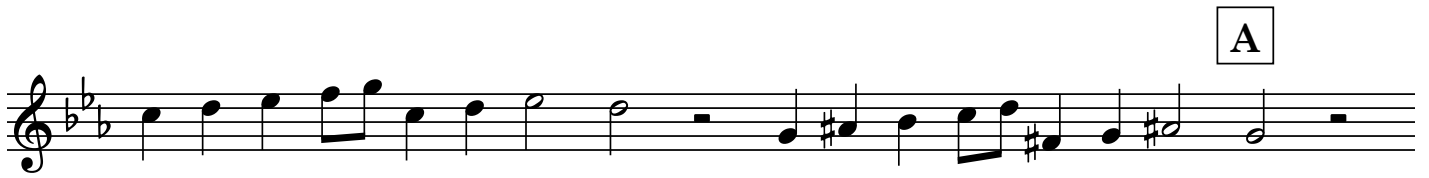
H



I



# Fancy 15



E



F



G



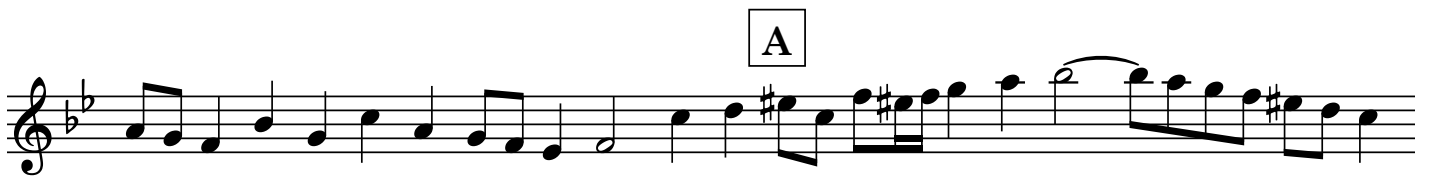
H



I



# Fancy 16







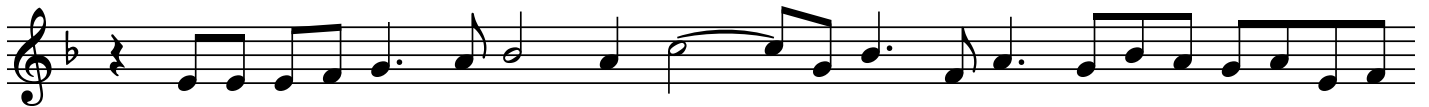
E



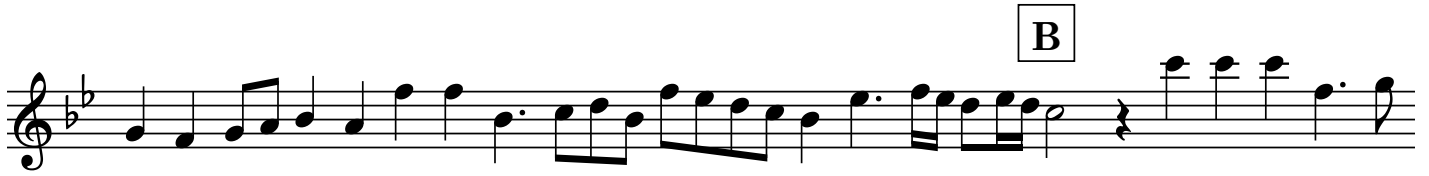
F



G



# Fancy 17



C



D



E

Section E consists of three staves of music. The first staff begins with a fermata over a half note E4. The second staff continues with a melodic line, featuring a fermata over a half note G4. The third staff concludes the section with a melodic line and a fermata over a half note Bb4.

F

Section F consists of two staves of music. The first staff begins with a melodic line and a fermata over a half note Bb4. The second staff concludes the section with a melodic line and a fermata over a half note G4.

G

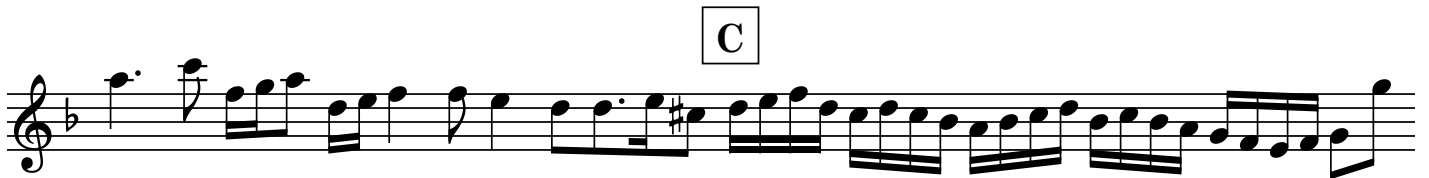
Section G consists of one staff of music, starting with a melodic line and a fermata over a half note Bb4.

H

Section H consists of one staff of music, starting with a melodic line and a fermata over a half note Bb4.

I

Section I consists of two staves of music. The first staff begins with a melodic line and a fermata over a half note Bb4. The second staff concludes the section with a melodic line and a fermata over a half note Bb4.

Treble Viol 1  
Fancy 18

E

Section E consists of three staves of music. The first staff contains measures 1-3, featuring a melodic line with eighth and sixteenth notes. The second staff continues the melody with a grace note in measure 2 and a triplet of sixteenth notes in measure 3. The third staff continues the melodic line with eighth and sixteenth notes.

F

Section F consists of two staves of music. The first staff contains measures 4-5, featuring a melodic line with eighth and sixteenth notes. The second staff continues the melody with eighth and sixteenth notes.

G

Section G consists of two staves of music. The first staff contains measures 6-7, featuring a melodic line with eighth and sixteenth notes. The second staff continues the melody with eighth and sixteenth notes.

H

Section H consists of two staves of music. The first staff contains measures 8-9, featuring a melodic line with eighth and sixteenth notes. The second staff continues the melody with eighth and sixteenth notes. A triplet of sixteenth notes is marked above the first measure of the second staff.

I



J



K

