

John Jenkins

Fancys 19-21 à 3

2 Trebles and Bass Viols

Bass Viol

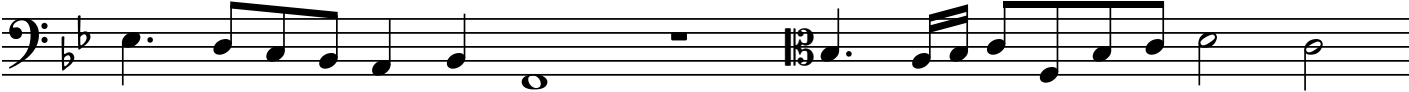
Edited barless by
Martha Bishop

Bass Viol

Fancy 19



A



B



C

3

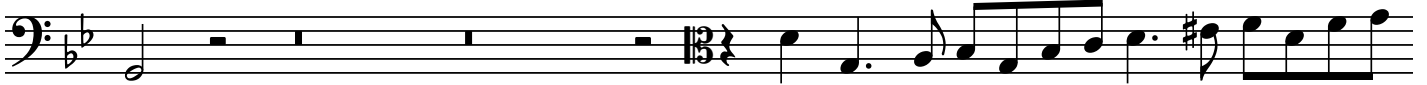


D

E



F



G



H



I



J



Fancy 20

A



B



C



D



E





Fancy 21



Musical staff with treble clef, key signature of two flats (B-flat and E-flat), and a boxed 'F' above the staff. The staff contains a sequence of notes: G4, A4, Bb4, C5, Bb4, A4, G4, F4, E4, D4, C4.

Musical staff with bass clef, key signature of two flats (B-flat and E-flat), and a boxed 'G' above the staff. The staff contains a sequence of notes: G3, F3, E3, D3, C3, B2, A2, G2, F2, E2, D2, C2.

Musical staff with treble clef, key signature of two flats (B-flat and E-flat), and a whole rest.

Musical staff with bass clef, key signature of two flats (B-flat and E-flat), and a sequence of notes: G3, F3, E3, D3, C3, B2, A2, G2, F2, E2, D2, C2.

Musical staff with treble clef, key signature of two flats (B-flat and E-flat), and a boxed 'H' above the staff. The staff contains a sequence of notes: G4, A4, Bb4, C5, Bb4, A4, G4, F4, E4, D4, C4.

Musical staff with bass clef, key signature of two flats (B-flat and E-flat), and a sequence of notes: G3, F3, E3, D3, C3, B2, A2, G2, F2, E2, D2, C2.

Musical staff with bass clef, key signature of two flats (B-flat and E-flat), and a boxed 'I' above the staff. The staff contains a sequence of notes: G3, F3, E3, D3, C3, B2, A2, G2, F2, E2, D2, C2.