

John Jenkins

Fancys Nos. 13-18 à 3 Viols

Two Trebles and Bass

Treble 2

Edited barless by
Martha Bishop

Fancy 13



A



B

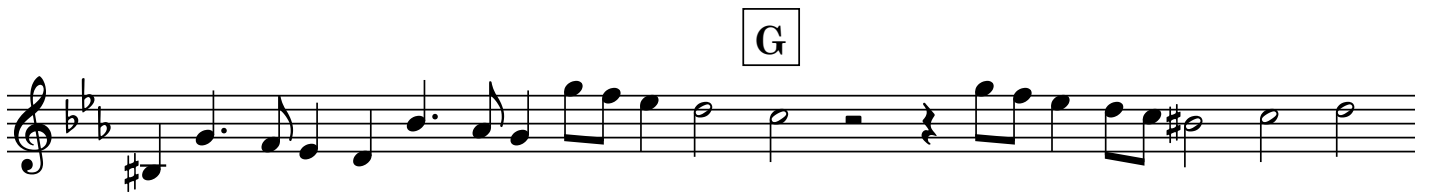
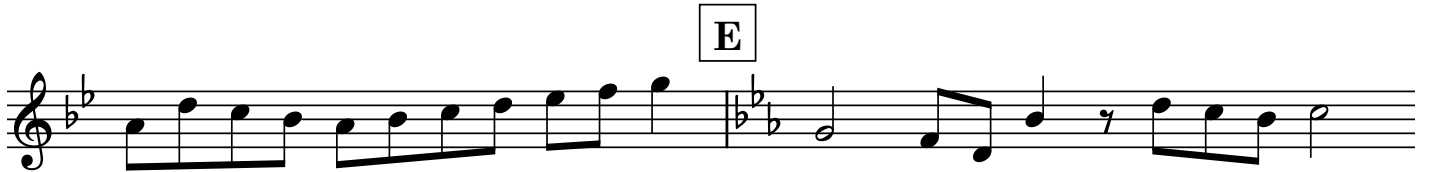


C



D





Fancy 14



The first staff of music in treble clef, key signature of two flats (B-flat, E-flat), and common time. It begins with a whole rest, followed by a half note G4, a dotted half note A4, and then a series of eighth and sixteenth note patterns.

A



The second staff of music, continuing the melody from the first staff. It features various rhythmic patterns, including eighth and sixteenth notes, and a sharp sign indicating a key change.

B



The third staff of music, showing a melodic phrase with a sharp sign. It includes eighth and sixteenth notes and a sharp sign indicating a key change.

C



The fourth staff of music, featuring a melodic phrase with a sharp sign. It includes eighth and sixteenth notes and a sharp sign indicating a key change.



The fifth staff of music, continuing the melodic development with eighth and sixteenth notes, and a sharp sign indicating a key change.



The sixth staff of music, featuring a melodic phrase with a sharp sign. It includes eighth and sixteenth notes and a sharp sign indicating a key change.

D



The seventh staff of music, showing a melodic phrase with a sharp sign. It includes eighth and sixteenth notes and a sharp sign indicating a key change.



The eighth staff of music, concluding the piece with a melodic phrase, eighth and sixteenth notes, and a sharp sign indicating a key change.

E



F



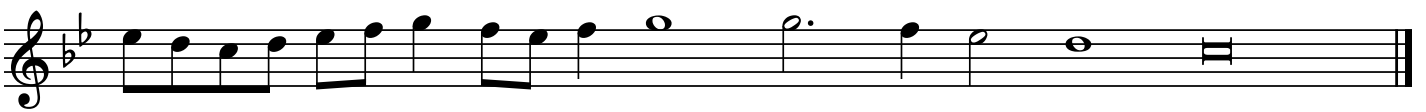
G



H



I



Fancy 15



A



B

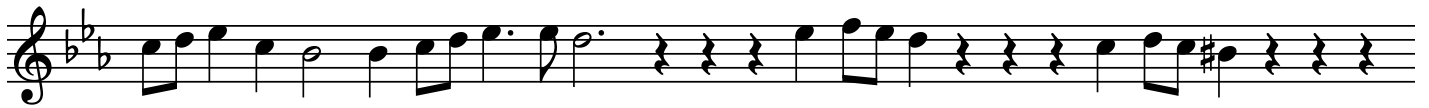


C

3



D



E



F

Two staves of musical notation. The first staff begins with a treble clef and a key signature of two flats (B-flat and E-flat). The music consists of quarter and eighth notes, with some accidentals (sharps and naturals). The second staff continues the melodic line with similar rhythmic patterns.

G

A single staff of musical notation starting with a treble clef. It begins with a whole rest, followed by a series of quarter and eighth notes, including some accidentals.

H

A single staff of musical notation starting with a treble clef. It contains a sequence of quarter and eighth notes with various accidentals.

I

A single staff of musical notation starting with a treble clef. It features a sequence of quarter and eighth notes, including a half note and some accidentals.

A single staff of musical notation starting with a treble clef. It contains a sequence of quarter and eighth notes with various accidentals.

A single staff of musical notation starting with a treble clef. It features a sequence of quarter and eighth notes, including a half note and some accidentals.

A single staff of musical notation starting with a treble clef. It contains a sequence of quarter and eighth notes with various accidentals.

A single staff of musical notation starting with a treble clef. It features a sequence of quarter and eighth notes, including a half note and some accidentals, ending with a double bar line.

Fancy 16



A



B



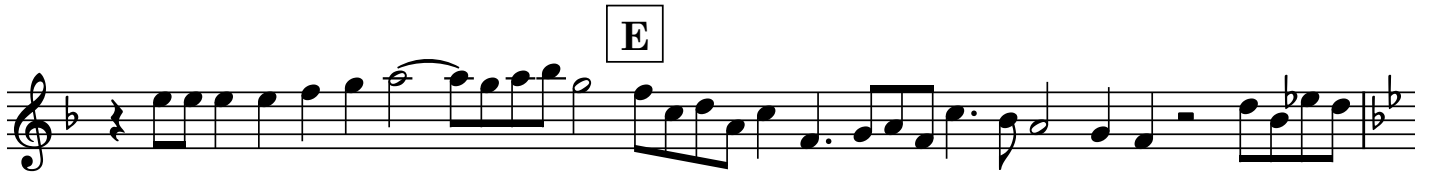
C

3



D





Fancy 17

Musical score for Treble Viol 2, titled "Fancy 17". The score is written in treble clef with a key signature of two flats (B-flat and E-flat). The piece consists of eight staves of music. The first staff begins with a treble clef, a key signature of two flats, and a common time signature. The music features a series of eighth and sixteenth notes, with some accidentals (sharps) appearing in the second and third measures. A repeat sign is present in the fourth measure. The second staff contains a measure with a whole rest, followed by a series of eighth and sixteenth notes. A boxed letter "A" is placed above the staff in the fifth measure. The third staff continues with eighth and sixteenth notes, including some accidentals. The fourth staff begins with a measure containing a whole note and a half note, followed by eighth and sixteenth notes. A boxed letter "B" is placed above the staff in the sixth measure. The fifth staff continues with eighth and sixteenth notes, including some accidentals. The sixth staff begins with a measure containing a whole note and a half note, followed by eighth and sixteenth notes. A boxed letter "C" is placed above the staff in the seventh measure, and a "3" is written above the eighth measure, indicating a triplet. The seventh staff continues with eighth and sixteenth notes, including some accidentals. A boxed letter "D" is placed above the staff in the eighth measure. The eighth staff concludes the piece with a series of eighth and sixteenth notes, ending with a double bar line and a key signature change to three flats (B-flat, E-flat, and A-flat).

E



F



G

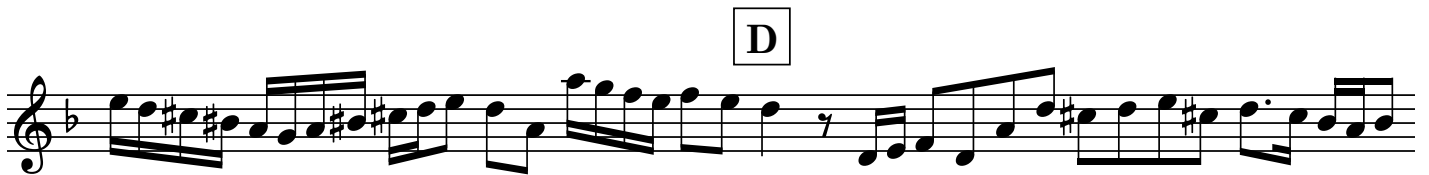


H

I



Fancy 18





E



F



G



H

3



I



J



K

