

John Jenkins

Fancys 1-6 à 3
2 Trebles and Bass Viols

Bass Viol

Edited barless by
Martha Bishop

Fancy 1

John Jenkins

A

B

C

D

E

3



F



G



H



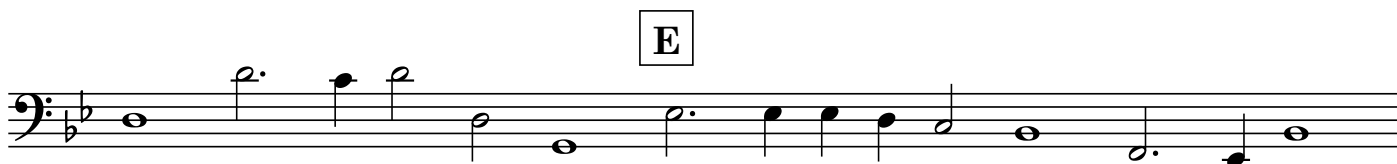
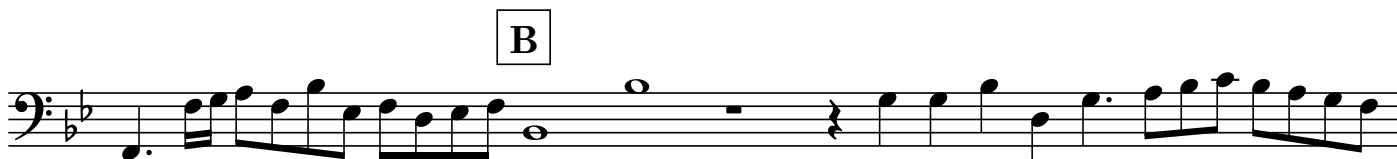
I



J



Fancy 2



F

Musical staff for section F, bass clef, key signature of two flats. The staff begins with a whole rest on the F line, followed by a dotted half note G, a half note A, and a quarter note B. The melody continues with eighth and sixteenth notes, including a triplet of eighth notes (C, D, E) and a quarter note F, ending with a whole note G.

G

3

Musical staff for section G, bass clef, key signature of two flats. The staff begins with a quarter note G, followed by a quarter note A, a quarter note B, and a quarter note C. A triplet of eighth notes (D, E, F) is marked with a '3' above it. The melody continues with eighth and sixteenth notes, ending with a quarter note G.

H

Musical staff for section H, bass clef, key signature of two flats. The staff begins with a quarter note G, followed by a quarter note A, a quarter note B, and a quarter note C. The melody continues with eighth and sixteenth notes, including a quarter note D, a quarter note E, a quarter note F, and a quarter note G, ending with a whole note G.

I

Musical staff for section I, bass clef, key signature of two flats. The staff begins with a quarter note G, followed by a quarter note A, a quarter note B, and a quarter note C. The melody continues with eighth and sixteenth notes, including a quarter note D, a quarter note E, a quarter note F, and a quarter note G, ending with a whole note G.

Final musical staff, bass clef, key signature of two flats. The staff begins with a quarter note G, followed by a quarter note A, a quarter note B, and a quarter note C. The melody continues with eighth and sixteenth notes, including a quarter note D, a quarter note E, a quarter note F, and a quarter note G, ending with a whole note G.

Bass Viol

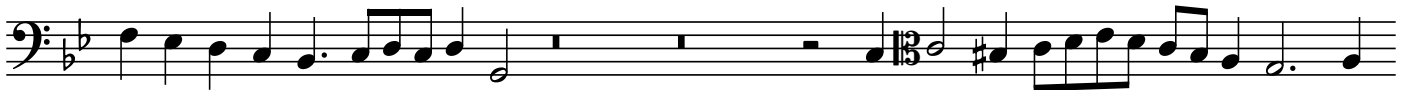
Fancy 3



A



B



C



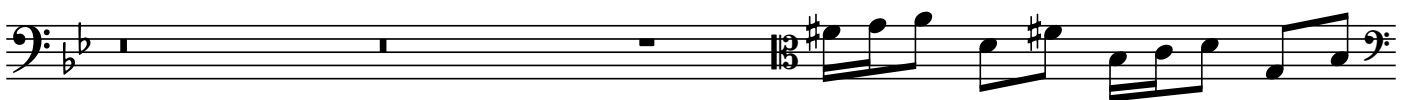
D



E



F



G

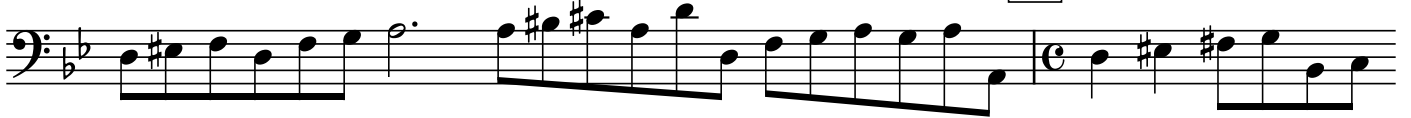


H

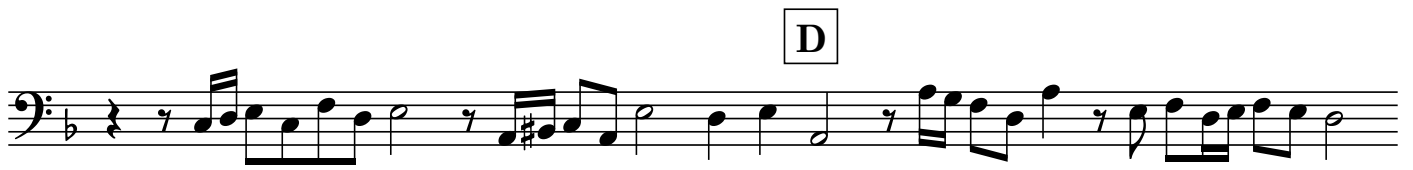
3



I



Fancy 4



E



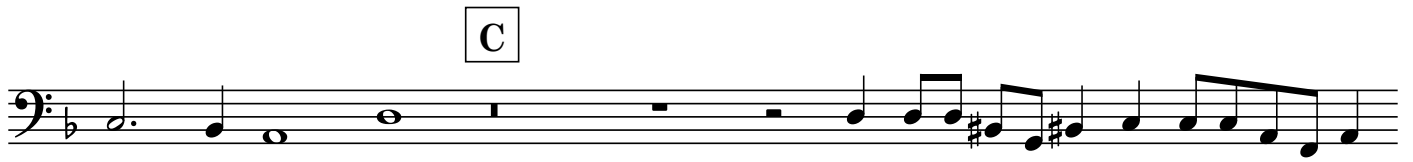
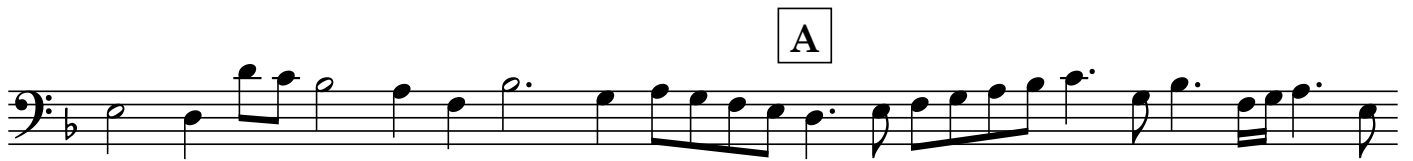
F



G



Fancy 5



E

F



G



H



Fancy 6



A



B



C



D



E



Bass Viol

The image displays a musical score for Bass Viol, consisting of ten staves of music. The score is written in bass clef and includes various musical notations such as notes, rests, and accidentals. The key signature is one flat (B-flat). The score is divided into sections by chord markers labeled F, G, H, I, J, K, and L. The first staff begins with a treble clef and a sharp sign, followed by a bass clef and a flat sign. The second staff begins with a treble clef and a sharp sign, followed by a bass clef and a sharp sign. The third staff begins with a treble clef and a sharp sign, followed by a bass clef and a sharp sign. The fourth staff begins with a treble clef and a sharp sign, followed by a bass clef and a flat sign. The fifth staff begins with a bass clef and a flat sign. The sixth staff begins with a bass clef and a flat sign. The seventh staff begins with a bass clef and a flat sign, followed by a treble clef and a flat sign. The eighth staff begins with a bass clef and a flat sign. The ninth staff begins with a bass clef and a flat sign. The tenth staff begins with a bass clef and a flat sign, followed by a common time signature and a sharp sign. The score concludes with a double bar line.

F

G

H

I

J

3

K

L