

John Jenkins

Fancys 1-6 à 3
2 Trebles and Bass Viols

Treble Viol 1

Edited barless by
Martha Bishop

Fancy 1

John Jenkins



A



B



C



D



Musical staff with treble clef, key signature of two flats (B-flat, E-flat), and a boxed 'E' above a triplet of eighth notes. The staff contains a sequence of eighth and quarter notes.

Musical staff with treble clef, key signature of two flats, and a common time signature. The staff contains a sequence of eighth and quarter notes.

Musical staff with treble clef, key signature of two sharps (F-sharp, C-sharp), and a boxed 'F' above the first measure. The staff contains a sequence of eighth and quarter notes.

Musical staff with treble clef, key signature of two sharps, and boxed 'G' and 'H' above measures. The staff contains a sequence of eighth and quarter notes.

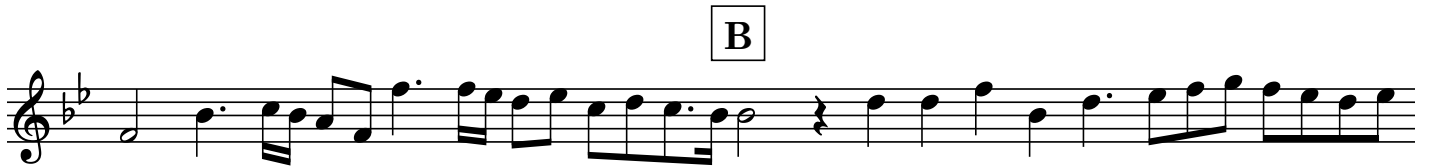
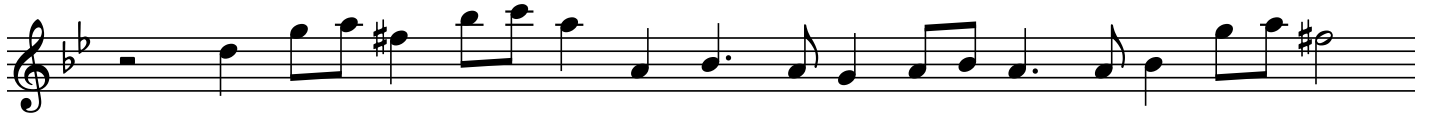
Musical staff with treble clef, key signature of two sharps, and various accidentals (flats and naturals). The staff contains a sequence of eighth and quarter notes.

Musical staff with treble clef, key signature of two flats, and a boxed 'I' above the first measure. The staff contains a sequence of eighth and quarter notes.

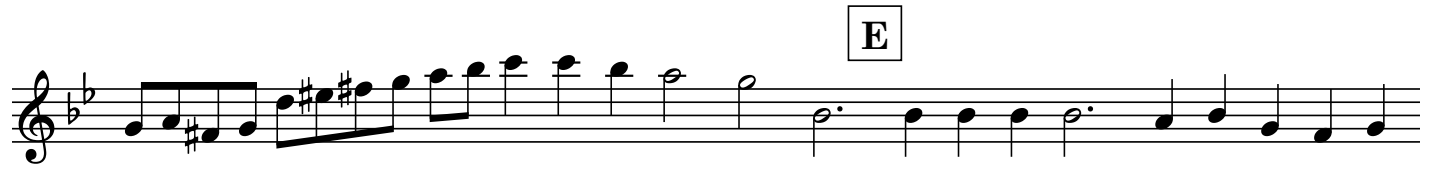
Musical staff with treble clef, key signature of two flats, and a boxed 'J' above the first measure. The staff contains a sequence of eighth and quarter notes.

Musical staff with treble clef, key signature of two flats, and a double bar line. The staff contains a sequence of eighth and quarter notes.

Fancy 2



E



Musical staff for exercise E, starting with a treble clef and a key signature of two flats (B-flat and E-flat). The melody begins with a half note G4, followed by quarter notes A4, B-flat4, and C5. A triplet of eighth notes (D5, E5, F5) is marked with a '3' above it. The exercise concludes with a half note G4.

F



Musical staff for exercise F, starting with a treble clef and a key signature of two flats. The melody begins with a half note G4, followed by quarter notes A4, B-flat4, and C5. A triplet of eighth notes (D5, E5, F5) is marked with a '3' above it. The exercise concludes with a half note G4.

G

3



Musical staff for exercise G, starting with a treble clef and a key signature of two flats. The melody begins with a half note G4, followed by quarter notes A4, B-flat4, and C5. A triplet of eighth notes (D5, E5, F5) is marked with a '3' above it. The exercise concludes with a half note G4.



Musical staff for exercise H, starting with a treble clef and a key signature of two flats. The melody begins with a half note G4, followed by quarter notes A4, B-flat4, and C5. A triplet of eighth notes (D5, E5, F5) is marked with a '3' above it. The exercise concludes with a half note G4.

H



Musical staff for exercise H, starting with a treble clef and a key signature of two flats. The melody begins with a half note G4, followed by quarter notes A4, B-flat4, and C5. A triplet of eighth notes (D5, E5, F5) is marked with a '3' above it. The exercise concludes with a half note G4.

I

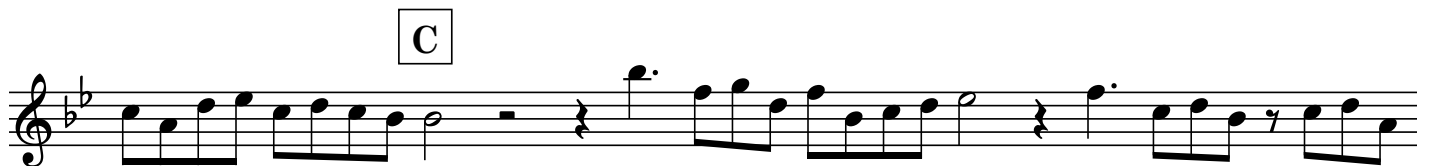
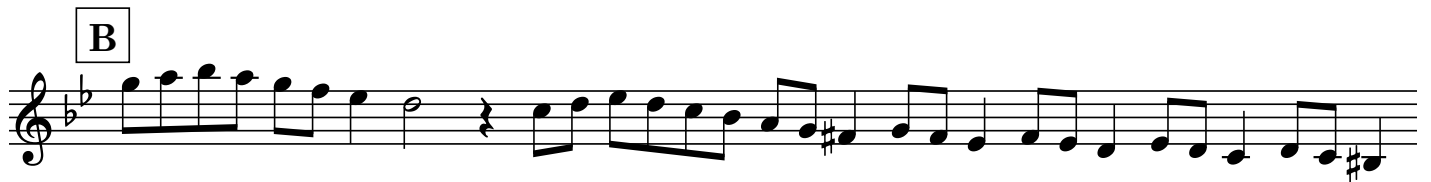


Musical staff for exercise I, starting with a treble clef and a key signature of two flats. The melody begins with a half note G4, followed by quarter notes A4, B-flat4, and C5. A triplet of eighth notes (D5, E5, F5) is marked with a '3' above it. The exercise concludes with a half note G4.



Final musical staff of the page, starting with a treble clef and a key signature of two flats. The melody begins with a half note G4, followed by quarter notes A4, B-flat4, and C5. A triplet of eighth notes (D5, E5, F5) is marked with a '3' above it. The exercise concludes with a half note G4.

Fancy 3



E

Two staves of musical notation in treble clef, key signature of two flats (B-flat and E-flat). The first staff begins with a treble clef, a key signature of two flats, and a sharp sign indicating a change in key signature to one flat (F major). The music consists of eighth and sixteenth notes with various rests.

F

G

Two staves of musical notation in treble clef, key signature of one flat (F major). The first staff begins with a treble clef, a key signature of one flat, and a sharp sign indicating a change in key signature to two flats (B-flat major). The music features eighth and sixteenth notes with rests.

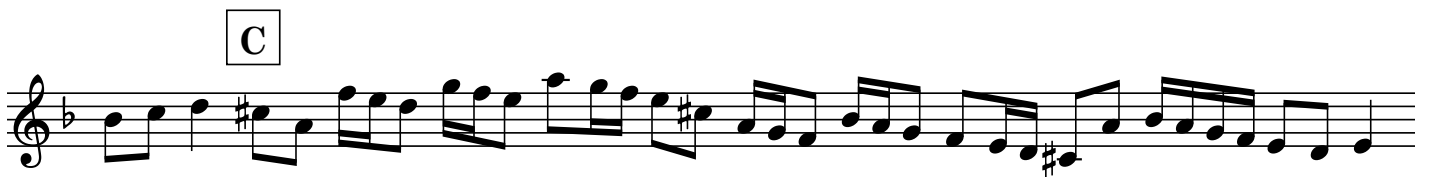
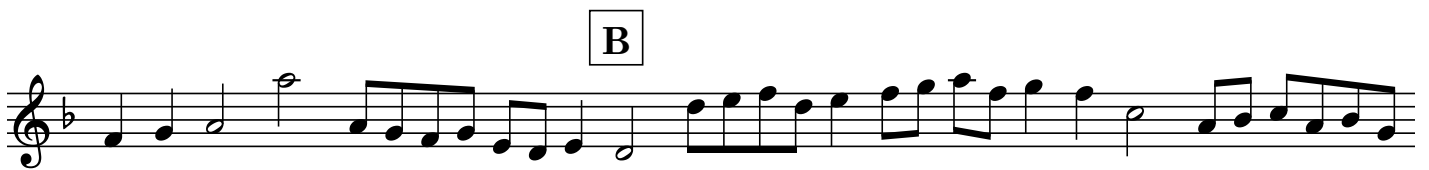
H

Three staves of musical notation in treble clef, key signature of two flats (B-flat and E-flat). The first staff begins with a treble clef, a key signature of two flats, and a sharp sign indicating a change in key signature to one flat (F major). The music includes a triplet of eighth notes and various rests.

I

Two staves of musical notation in treble clef, key signature of two flats (B-flat and E-flat). The first staff begins with a treble clef, a key signature of two flats, and a sharp sign indicating a change in key signature to one flat (F major). The music consists of eighth and sixteenth notes with rests.

Fancy 4





E



F



G



Fancy 5



D

Two staves of musical notation. The first staff begins with a treble clef, a key signature of one flat (B-flat), and a common time signature. It contains a sequence of eighth and sixteenth notes, followed by a quarter rest. The second staff continues the melodic line with similar rhythmic patterns, ending with a sharp sign on the final note.

E

F

Two staves of musical notation. The first staff starts with a treble clef, a key signature of one sharp (F#), and a common time signature. It features a melodic line with eighth and sixteenth notes, including a grace note. The second staff continues the piece, ending with a sharp sign on the final note.

G

A single staff of musical notation with a treble clef, a key signature of one flat (B-flat), and a common time signature. The melody consists of eighth and sixteenth notes, with a grace note at the beginning.

H

Two staves of musical notation. The first staff has a treble clef, a key signature of one flat (B-flat), and a common time signature. It begins with a grace note and contains a sequence of eighth and sixteenth notes. The second staff continues the melodic line, ending with a double bar line.

Fancy 6



A



B

C



D



E





F



G



H



I

J

3



K



L

